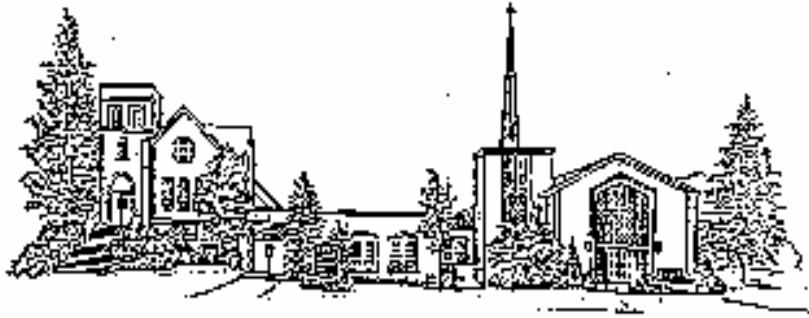


# *TIDINGS*

## **OCTOBER 2011**



Welcoming and Supporting Individuals and Families  
to Grow in Faith!

### **FIRST PRESBYTERIAN CHURCH**

**717 St. Luke's Place  
Baldwin, New York 11510**

**Church Office Telephone Number: (516) 223-2112**

**Church Fax Number: (516) 223-0866**

**Church Website: [www.firstpresbyterianbaldwin.org](http://www.firstpresbyterianbaldwin.org)**

**Pastor's Blog site: [www.baldwinpresby.blogspot.com](http://www.baldwinpresby.blogspot.com)**

**Church e-mail: [baldwinchurch@verizon.net](mailto:baldwinchurch@verizon.net)**

**Pastor's e-mail: [thepastor3@verizon.net](mailto:thepastor3@verizon.net)**

**Ministers: All the People of the Church**

**The Rev. Adrian J. Pratt, Pastor**

**Ksenia Lowenfels, Music Director**

**Yvonne Pratt, Secretary**

**Edward Hansen, Sexton**

## ADRIAN'S ANECDOTES ...



World Communion Sunday always has a specific significance for me as it was the first Sunday that I preached after we had moved as a family to the United States fifteen years ago. As soon as we stepped off a plane in Atlanta, we had a lot of trouble with Visas and Red Tape, and for a while were not even sure if we were going to be put back on a plane and sent home again. All of this was on top of the traumatic experience of saying good-bye to the rest of our family, some of whom we weren't sure if we would ever see again!

So it was for myself a very memorable experience to stand in the pulpit of a church that had called me across the ocean to be their pastor. Now I find myself in a different State, standing in another pulpit where I know God has called me, and approaching another World Communion Day Celebration.

The realization that friends and colleagues that God has blessed my life with around the world, will also be coming to a table laid with bread and wine, gives me a sense that this business of believing is a lot bigger thing than any of us can truly conceive. When Jesus spoke about taking His message into 'all the world', He meant it! Getting caught up in His message can be more of a challenge than we think we are capable of taking on board.

Following Jesus Christ was never meant to be easy or comfortable. We are called to change, and times of transition can be difficult. But if we are going to grow and flourish then we must be willing to make changes and to face numerous transitions. Faithfulness to God requires nothing less. In Ephesians 4:23 the apostle Paul tells us to "*Be renewed in the spirit of your minds.*"

As we travel through a new season in the life of our church I invite you to prayerfully consider how '*being renewed*' may effect your times, talents and treasures ... and to consider areas in your life where there has to be change or transition. 'Yes'... that is a challenge and... 'No' ... it's not easy. But faithfulness to God requires nothing less.

*-Rev. Adrian J. Pratt*

## PRAYER CONCERNS

To all our members and friends who are going through difficult times or are unwell or recovering from illness or surgery at this time, we send you our heartfelt concerns and prayers and wish you all a speedy recovery.



~~~~~

## FIRST AND THIRD BIBLE STUDIES

### – “The Gospel of Matthew”

Bible Studies at the church are now underway.

The evening and morning studies cover the same material and the theme is: ‘*According to Matthew*’.

The schedule through the end of the year is as follows:



### Tuesday Night 8:00 p.m.

October 4  
October 18  
November 1  
November 15  
December 6  
December 20

### Thursday Morning 10:00 a.m.

October 6  
October 20  
November 3  
November 17  
December 1  
December 15

All members of the congregation are invited to attend. Please mark your calendars. We look forward to seeing you!

~~~~~

## CONDOLENCES

The sympathy and concern of First Presbyterian Church of Baldwin is expressed to **Regina Fogelberg** and family in the death of her mother, Josephine Schiavi who passed away at the age of 93 years. She was buried on August 15, 2011 in St. Ephraim’s Church in Brooklyn.

Also, some of you may remember a former elder of this church, Leonard E. Vielbig who passed away in 1984. On August 17th, 2011 his wife **Jeanne Dousman Vielbig** passed away, three weeks shy of her 98th birthday. A memorial service will be held on October 8th at 1:00 p.m., at Shelter Island Presbyterian Church.



*Our thoughts and prayers are with you all.*

## "IN LIEU OF FLOWERS"

The Memorial Fund is a viable alternative for those of us who wish to honor and remember a close friend or acquaintance or perhaps a distant relative when the donation of flowers, fruit, etc. is just too much.

Memorial Packets include an announcement card to the decedent's family with a plain envelope and an envelope addressed to the church with a card for your donation. These packets are available in the Narthex or at the church office.



First Presbyterian Church of Baldwin is grateful for all the donations received for The Memorial Fund. Since the last issue of the *Tidings*, this includes the following:

- ... Josephine Schiavi from John & Joan Murray
- ... Helene Kappelmann from Emily & Jared Ziegler
- ... Helene Kappelmann from Evelyn Sullivan
- ... Helene Kappelmann from Madeline & Jeff Speight
- ... Helene Kappelmann from Kent & Nancy Williamson
- ... Helene Kappelmann from Alice Sturzinger
- ... Helene Kappelmann from Claire & Jerry Bradley



## FLOWER DONATIONS



Don't forget you can sign up for flowers to be placed in the Sanctuary on any given Sunday. All you need to do is check the Flower Chart in the Narthex for availability and complete a "Flower Donation Form", which can be placed in the offering plate, or handed in to the church office. You can donate in memory of loved ones or in celebration of a birthday/anniversary or something special you wish to share.

Your donation tribute will appear in the bulletin on the Sunday that you specified. The cost is \$20 per donation.

**FIRST PRESBYTERIAN CHURCH OF BALDWIN, NY**  
**STATED SESSION MEETING SUMMARY**  
**WEDNESDAY, SEPTEMBER 14, 2011**

Session met for their stated meeting on Wednesday September 14, 2011. After opening prayer, reports from Acting Clerk, Pastor and Committees were received and approved. The bulleted list below highlight the business transacted:

- **Our Clerk reported that** since the last meeting, there had been one **Death:** Helene Kappelman on July 23, 2011. There had been two **Baptisms:** Jamie Charles Lieffrig, son of Danielle Lindvall and Paul Lieffrig, on Sunday July 17, 2011; and Aniya Huggins, daughter of Andrea and Achim Huggins, on July 31, 2011. Communion had been served on Sundays, July 3, August 7, and September 4, 2011.
- **Our Pastor** requested vacation time from November 20 through 26, 2011, and December 27 through 29, 2011. He also requested to carry over into 2012, his two unused vacation Sundays, as his mother's health is uncertain, and he wants to be able to leave for England on short notice if necessary. In addition, he requested to carry over into 2012 any unused 2011 Continuing Education funds. It was moved, seconded, and approved to grant the vacation time, and the carryovers of vacation Sundays and Continuing Education funds as requested.
- **Adult Education Committee:** Adult Forum on Sunday, September 18, 2011, will be a Hymn Sing; and on the following Sunday, September 25, 2011, Rev. Pratt will prepare a "Fall Kickoff" program. On Sunday, October 23, 2011, the Stewardship and Finance Committee will prepare a program on the Fall Stewardship Campaign and the 2012 Budget. Several other programs are in the planning stages, including a presentation by the Buildings and Grounds Committee on the scope of their work.
- **Christian Education Committee** Three new Sunday School teachers have volunteered: Erika Floreska, Wanda Fazarro, and Carol Sue Barnett.
- **Buildings and Grounds:** The new underground sprinkler system has been installed and works well. ♦ Several areas of leaking appeared as Hurricane Irene blew through. We will watch these areas, and repair as necessary. ♦ Andrew Olsen and a crew of other Boy Scouts performed a cleanout of files and other items stored on the third floor. Additional shelving was constructed and installed. ♦ A maple tree was removed from the manse grounds. ♦ A Department of Labor inspection of our boilers was performed. Our plumber had to explain some of the automated controls built into our heating system.
- **Fellowship Committee:** A cleanup crew, perhaps on a rotating basis, is needed for special events held in Beyer Hall. ♦ Now that we have current projection equipment, consideration can be given to scheduling a "movie night" periodically.

*Continued...*

Continued...

- **Stewardship and Finance Committee:** The Treasurer's report for Local Mission, the Memorial Fund, Bank balances, etc. was reviewed. ♦ The Fall Stewardship Campaign and 2012 Budget will be planned at the next Committee meeting. ♦ At the October Session Meeting, the Committee will recommend how to use the funds donated to our church by the Estate of Harry Schneider.
- **General Mission Committee:** Mission donations over the summer included \$4,702 in July, and \$649 in August. ♦ On World Communion Sunday, October 2, 2011, we will receive the Peacemaking Offering. Three Minutes for Mission are scheduled, and a peacemaking presentation will be part of Sunday School classes. ♦ A scholarship fund in the name of Helene Kappelman is being organized.
- **Invested Resources Committee:** The September 13 balance was \$308,794.62. This compares favorably with last September's figure of \$316,597 when the 2011 distribution of \$16,000 is factored in.
- **Outreach Committee:** "Welcome" pew inserts have been refreshed and replenished. The CNS Director is including one in the take-home folder of each enrolled child.
- **Worship and Music Committee:** The Sunday School children will be singing in the Worship Service on Sunday, October 2, 2011. ♦ The children's musical for the Christmas Dinner will be "Why the Chimes Rang." Rehearsals will be during Sunday School class time. ♦ "The Tale of the Three Trees" will be performed on Sunday, March 25, 2012. ♦ Tartan Sunday will be April 29, 2012. ♦ Two Music Sundays are scheduled for 2012: May 20, and October 14.
- **ANNOUNCEMENTS:**
  1. The next scheduled Stated Session Meeting will be 7:30 p.m., October 12, 2011.
  2. The next scheduled Presbytery Meetings will be the Visioning Retreat on Saturday, September 24, 2011 at Garden City Presbyterian Church; and the regular Presbytery Meeting on Saturday, October 22, 2011, at the Massapequa Presbyterian Church.

*-Rev. Adrian J. Pratt, Moderator of Session*

~~~~~

## EMAIL ADDRESSES

We are updating the church e-mail list. If you haven't already done so, please e-mail a note to Yvonne Pratt at baldwinchurch@verizon.net with your address – **IF** it differs from the one printed in the last directory.

Please put "**e-mail address**" in the subject line to help her sort messages. Thank you.

*-Outreach Committee*



## YOUTH ACTIVITIES

Plans are in hand for our Fall schedule. Events include participating in the CROP Walk to joint ventures with other Presbyterian Churches in Nassau County. Watch the bulletin for updates.



~~~~~

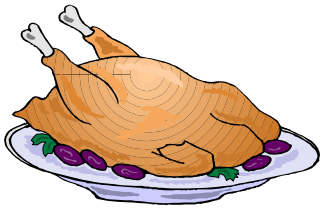
## UPPER ROOM DEVOTIONALS

Please feel free to take a copy of the **September/October, 2011** issue of the Upper Room Devotionals. They are located in the Narthex.

~~~~~

## TURKEY DONATIONS NEEDED

If you have an **extra Turkey**, please bring it to the church. We need 36 for the whole year. They will be shared with the **Interfaith Nutrition Network** to feed hungry people in our community.



We will cook for the INN on **Monday, October 24, 2011** at 7:00 p.m., in Beyer Hall.

~~~~~

## CROP WALK

On **Sunday, October 16, 2011** from 1:00-3:00 p.m., (rain or shine) come and join us in the annual CROP walk at Baldwin Park, Grand Avenue, Baldwin. Come walk with your whole family. Support our youth as they ask for your support in this walk-a-thon.



Sponsor sign-up sheets are available from Vicki Warden if you'd like to walk. Please see her as soon as possible.

~~~~~

## WEEKEND OF SHARING

The Weekend of Sharing is an event sponsored by the Interfaith Conference of Baldwin. Our congregation has been asked to donate **coffee and iced tea mix** as part of the food drive. You can place your donations in a box in the Narthex of the Sanctuary. We deliver our donations on **Sunday October, 23rd** along with other diverse houses of worship in our community.

Our beloved Helene Kappelman was the representative to the Interfaith Conference. We believe a generous drive contribution from our church would be a wonderful way to honor her dedication to this community organization.

Thank You.

*-Matt and Felicia Wilson*

## FOOD OFFERING

The shelves are nearly bare at the Long Island Council of Churches' Emergency Food Pantries—where more people than ever before are turning for help. Donations can be dropped off in Freeport (450 N. Main Street, 516-868-4989), Hempstead (in Christ's 1<sup>st</sup> Presbyterian Church, 516-565-0290), or Riverhead (407 Osborne Avenue at Lincoln, 631-727-2210) or at any LICC meeting or event. They particularly need canned meat, hash, stew, tuna, beans, fruit, peanut butter, jelly, low-sodium food, low-fat food, dietetic food, Ensure (and similar supplements), and infant formula. Donations of toiletries, personal care items, school supplies, small household goods, and shopping bags also are welcome at all locations.



Don't forget, the First Presbyterian Church of Baldwin regularly collects non-perishable food items on the **First Sunday of each Month**. A box for this purpose is placed in the Narthex. All items are forwarded to the Freeport Food Pantry. Thank you for your support.

---

## KINGDOM KIDS



"Kingdom Kids" has its program on Tuesdays from 4-5 p.m. If you have a child in 2nd through 5th grade that would like to join us, please speak with the Pastor or Yvonne Pratt as soon as possible.

---

## ELDER AND DEACON TRAINING

**When:** Saturday, October 1

**Where:** Community Church of Massapequa

**Time:** 9:00 am – 3:30 pm

**Cost:** \$8.00 per person for lunch

**What:** A biblical model of officer training. Deacons and Elders will learn:

- What Scripture says about leadership
- What it means to be called by God
  - What Presbyterians believe
- How our church government works
  - Responsibilities of officers

Brochure and Registration forms are available from the Clerk of Session.



## PRAYER SHAWL CIRCLE

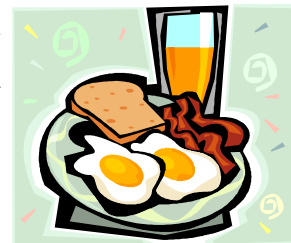
*"Calling all knitters and crocheters!"*

The Prayer Shawl Circle will resume the regular 1st Wednesday of the month meetings on **October 5th, at 7:30 p.m.** Bring yarn and needles and crochet hooks or a prayer shawl you already have in progress. For more information, call Penny Blanchard (763-4568) or Bobbi Angelillo (623-6898).



## PRESBYTERIAN WOMEN'S BREAKFAST CLUB

The Presbyterian Women's Breakfast Club meet on the 3rd Tuesday of each month at 10:00 a.m., at the Baldwin Coach Diner. This is an opportunity to fellowship with other women from First Presbyterian Church and enjoy good food and conversation. They meet next on **Tuesday, October 18th.** For more information, contact Marge Leverage at 223-5439.



## WOMEN'S DINNER



The women of First Presbyterian Church of Baldwin are planning a evening of food and friendship at Nick's Pizza in Rockville Centre on **Wednesday, October 26th at 7:00 p.m.** All women are invited to attend. If you need more information, please call Erika Floreska (379-8080). We look forward to seeing you there.



## MEN'S WEDNESDAY DINNER

Join the Men of the Church for their monthly dinner out, on the **third Wednesday of each month at 7:00 p.m.** You'll enjoy great food, good company and lively conversation. Interested? Ask Carl Larson. **Next dinner is Wednesday, October 19th.**



## **DEADLINE FOR THE NOVEMBER 'TIDINGS' IS MONDAY, OCTOBER 17TH**

**Please ensure articles are in the office on or before 1:00 p.m., on Monday, October 17th, for inclusion in the November 2011 Tidings. Thanks so much!**



## Focus on Fellowship 2011/2012

|                                                                                                                                                                                                                                     |                                                                                                                                                                                                                                                                                                                 |                                                                                                                                                                                                                                   |
|-------------------------------------------------------------------------------------------------------------------------------------------------------------------------------------------------------------------------------------|-----------------------------------------------------------------------------------------------------------------------------------------------------------------------------------------------------------------------------------------------------------------------------------------------------------------|-----------------------------------------------------------------------------------------------------------------------------------------------------------------------------------------------------------------------------------|
| <p style="text-align: center;"><b>OCTOBER 2011</b></p> <p>10/16 CROP Walk<br/>         10/18 Women's b'fast<br/>         10/19 Men's Dinner<br/>         10/26 Women's Dinner<br/>         10/28 Family Movie Night</p>             | <p style="text-align: center;"><b>NOVEMBER 2011</b></p> <p>11/15 Women's b'fast<br/>         11/16 Men's Dinner<br/>         11/19 High School Play –<br/>                   Afterglo at Angelillos'<br/>         11/30 Women's Dinner</p>                                                                      | <p style="text-align: center;"><b>DECEMBER 2011</b></p> <p>12/11 Christmas Dinner<br/>         12/18 Caroling – Open<br/>                   House at Danns'<br/>         12/20 Women's b'fast<br/>         12/21 Men's Dinner</p> |
| <p style="text-align: center;"><b>JANUARY 2012</b></p> <p>01/17 Women's b'fast<br/>         01/18 Men's Dinner<br/>         01/25 Women's Dinner<br/>         01/29 Bowling &amp; Pizza<br/>                   and Parlor Games</p> | <p style="text-align: center;"><b>FEBRUARY 2012</b></p> <p>02/15 Men's Dinner<br/>         02/21 Women's b'fast<br/>         02/22 Ash Wednesday<br/>                   Soup Supper<br/>                   (proceeds to One Great<br/>                   Hour of Sharing)<br/>         02/29 Women's Dinner</p> | <p style="font-size: 1.5em;"><b>SAVE THE DATES!</b></p>                                                                                                                                                                           |

**NOTE:** The Church office will be closed on **Monday, October 10th**, in observance of Columbus Day.

### CHURCH OFFICE HOURS

Church Office hours are: Monday through Thursday from 9:00 am to 1:00 pm. *Note:* The office is closed on Fridays and Holidays.

## UPCOMING DATES FOR NOVEMBER

|                                                |                                                                                                                                     |
|------------------------------------------------|-------------------------------------------------------------------------------------------------------------------------------------|
| Tuesday, November 1                            | Bible Study                                                                                                                         |
| Wednesday, November 2                          | Prayer Shawl Circle                                                                                                                 |
| Thursday, November 3                           | Bible Study                                                                                                                         |
| Sunday, November 6                             | Daylight Savings Time ends<br>Communion/Food Offering<br>Hofstra University Chaplain, Joyce Dugger,<br>will participate in worship. |
| Tuesday, November 8-<br>Wednesday, November 9  | LIPW Retreat at Sag Harbor                                                                                                          |
| Wednesday, November 9                          | Session                                                                                                                             |
| Friday, November 11                            | Veteran's Day                                                                                                                       |
| Friday, November 11-<br>Saturday, November 12  | Holmes Camp Youth Weekend                                                                                                           |
| Monday, November 14                            | Deadline for Tidings                                                                                                                |
| Monday, November 14                            | Deacons                                                                                                                             |
| Tuesday, November 15                           | Bible Study                                                                                                                         |
| Thursday, November 17                          | Bible Study                                                                                                                         |
| Saturday, November 19                          | HS Play and Afterglow at Angelillos                                                                                                 |
| Sunday, November 20                            | Interfaith Thanksgiving Service – venue TBA.                                                                                        |
| Sunday, November 20-<br>Saturday, November 26  | Pastor on Vacation                                                                                                                  |
| Wednesday, November 23-<br>Friday, November 25 | Office Closed                                                                                                                       |
| Thursday, November 24                          | Thanksgiving Day                                                                                                                    |
| Sunday, November 27                            | First Sunday in Advent –<br>All Age Wreath Making following worship                                                                 |
| Sunday, November 27                            | Building & Grounds Committee meeting                                                                                                |
| Monday, November 28                            | Cook for the INN                                                                                                                    |

~~~~~

## OFFERING ENVELOPES

If there is anyone that doesn't have offering envelopes for the remainder of this year but would like them (adult or child), please see Howard Batsford or leave a note in the office. The advantage of having envelopes is that you will get a statement of giving – handy for tax purposes.

## WORSHIP SERVICES FOR OCTOBER, 2011

**October 2** – World Communion Sunday: Peacemaking Offering

“Mari Jones – A Tale from Wales ” – Rev. Adrian J. Pratt

**October 9** – “Who Me? A Disciple?” (*Matthew 9*) - Rev. Adrian J. Pratt

*‘Three Thessalonian Songs’*

**October 16** – “Standing on the Promises” - Rev. Adrian J. Pratt

**October 23** – “Pass it on” - Rev. Adrian J. Pratt

**October 30** – (Reformation Sunday) “Thou Art Worthy” - Rev. Adrian J. Pratt

~~~~~

### **CALLING ALL COLLEGE STUDENTS...**

*We Need College  
Students Addresses!*



Once again, we would like to compile a list of college students who are away so that they can be sent a copy of the ‘*Tidings*’ each month.

**Please let the church office** know if you have a student at college and provide their mailing addresses so we can add them to our mailing list.

~~~~~

### FROM THE STEWARDSHIP COMMITTEE



**Sunday, November 6th**, will be our annual Stewardship Sunday. At that time we will receive your pledges of financial support for our church in Baldwin as well as support for Mission projects in Baldwin, on Long Island and beyond. You will be hearing more during ‘Minute for Missions’ and in a detailed mailing late in October, about our church’s financial condition and our projections

for next year. Also, we will devote an Adult Forum to explaining our needs and answering questions.

You will also receive your statement of giving for this year (through September) early in October. It is important that pledges of support for this year be kept up to date in order that we can pay our bills. Thank you.

## Peacemaking Offering World Communion Sunday, October 2, 2011



The Peacemaking Offering was created in 1980 to support the efforts of the Presbyterian Church (U.S.A.) to live out a deeper commitment to peacemaking as part of our faithfulness to God. It is one of four special offerings of the Presbyterian Church and supports the efforts of Presbyterians at the local, regional and national levels to share God's healing and peace. This offering is unique in that our congregation retains 25% for local peacemaking initiatives; in the past we have supported the Eastern Farmworkers, the Long Island Coalition for Affordable Rental Housing, local AIDS ministries and the L.I. Council of Churches Emergency Food Pantry. Synods and presbyteries receive 25%; the General Assembly receives 50% of the offering and uses it to sponsor peacemaking conferences, provide resources and support to peacemaking leaders and participate in the antiracism and cultural proficiency efforts of the PC(USA).

This year's theme is "A Harvest of Justice Is Sown in Peace" (James 3:18)." We will receive the Peacemaking Offering on **World Communion Sunday, October 2nd**, and we ask for your prayerful consideration of your contribution.

### **Please Give Generously!**

## **GROUPS THAT REGULARLY MEET AT FPCB**

**Check with the group leader/moderator/calendar for any changes**

**Alcoholics Anonymous** groups meet regularly on Wednesdays at 7:30 p.m., and Saturdays at 7:30 p.m. and 9:00 p.m.

**Bell Choir** meet regularly for rehearsal on Thursdays at 7:00 p.m.

**Bible Study** is bi-monthly on the first and third Tuesday at 8:00 p.m., and on the first and third Thursday at 10:00 a.m.

**Chancel (Adult) Choir** meet regularly for rehearsal on Thursdays at 8:00 p.m.

**Cook for the INN** (Interfaith Nutrition Network) is the fourth Monday at 7 p.m.

**Deacons** meet regularly on the second Monday of each month at 7:30 p.m.

**Gamblers Anonymous** group meet regularly on Tuesdays at 7:30 p.m.

**Girl Scouts** meet as follows: (Check calendar for exact dates)

**Cadet Troop #2181** alternate Thursdays from 4:15-5:15 p.m.

**Junior Troop #2445** Thursdays from 6:30-8:00 p.m.

**Senior/Ambassador Troop #2106** Bi-monthly on a Monday 7:30-9:00 p.m.

**Kingdom Kids** group meet on Tuesdays from 4:00-5:00 p.m.

**Prayer Shawl Circle** meet on the first Wednesday of each month at 7:30 p.m.

**Session** meet regularly on the second Wednesday of each month at 7:30 p.m.

**Yoga** group meet on Mondays from 9:45 – 11:00 a.m.

**Youth Group** meet on Sundays at 7:00 p.m.

~~~~~

Please refer to the **October Calendar** to keep in touch with the many activities that **First Presbyterian Church of Baldwin** has to offer.

**Also**, don't forget to check out our website from time to time as an up-to-date schedule is always posted at [www.firstpresbyterianbaldwin.org](http://www.firstpresbyterianbaldwin.org)

*YOU ARE INVITED TO*  
**"FAMILY MOVIE NIGHT"**

**FRIDAY, OCTOBER 28TH, 2011**

**AT 8:00 P.M. – BEYER HALL**

*COME JOIN US FOR A FUN EVENING OF  
ENTERTAINMENT AND FELLOWSHIP*

***FREE CONCESSIONS AND DESSERT PROVIDED!***

**LONG ISLAND PRESBYTERIAN WOMEN'S  
FALL RETREAT  
CORMARIA, SAG HARBOR  
NOVEMBER 8-9, 2011  
THEME: "RISE AND SHINE"**

Please watch the bulletin board for further information.  
If you have never attended before, consider taking part this year.

It's such a pleasure to meet  
Presbyterian Women from other churches.  
Contact Janet Kempner (868-7795) if you want more information.

***Baldwin Senior High School  
Presents***



***Saturday evening, November 19, 2011  
at 7:30 p.m.***

***Afterglow  
at the Angelillos  
1926 Herbert Street, Baldwin***

***Please call Bobbi Angelillo (623-6898) or the  
Church office (223-2112) with questions or to  
reserve tickets.***